

Sodexo UK&I FY23
GHG Emission Data



**SOCIAL
IMPACT**
PLANET

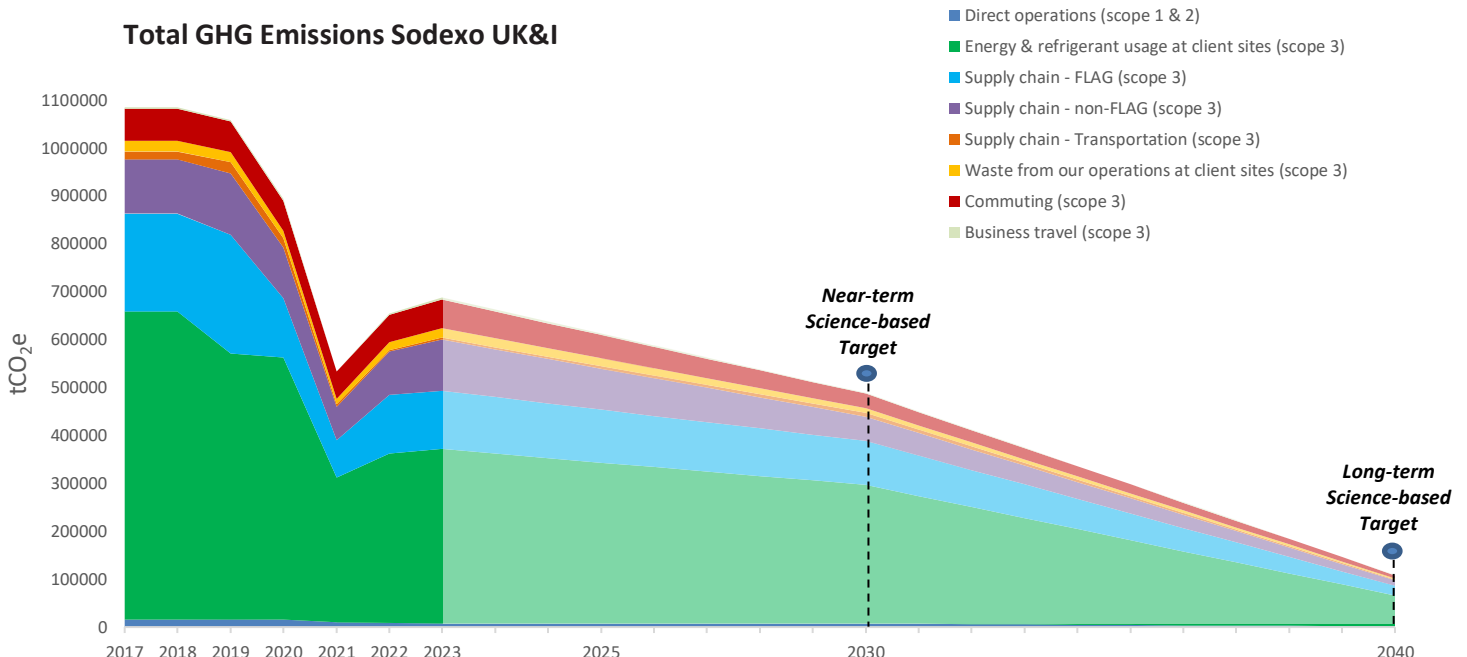
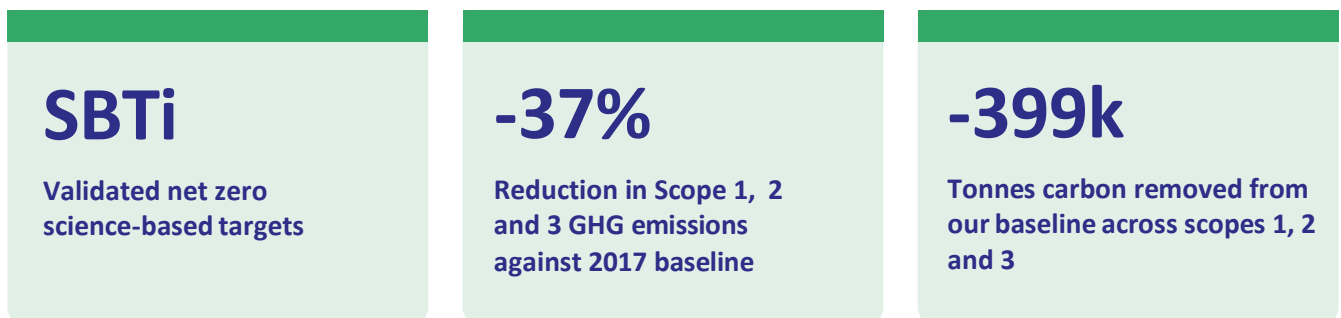
Sodexo UK&I FY23

GHG Emissions

Introduction

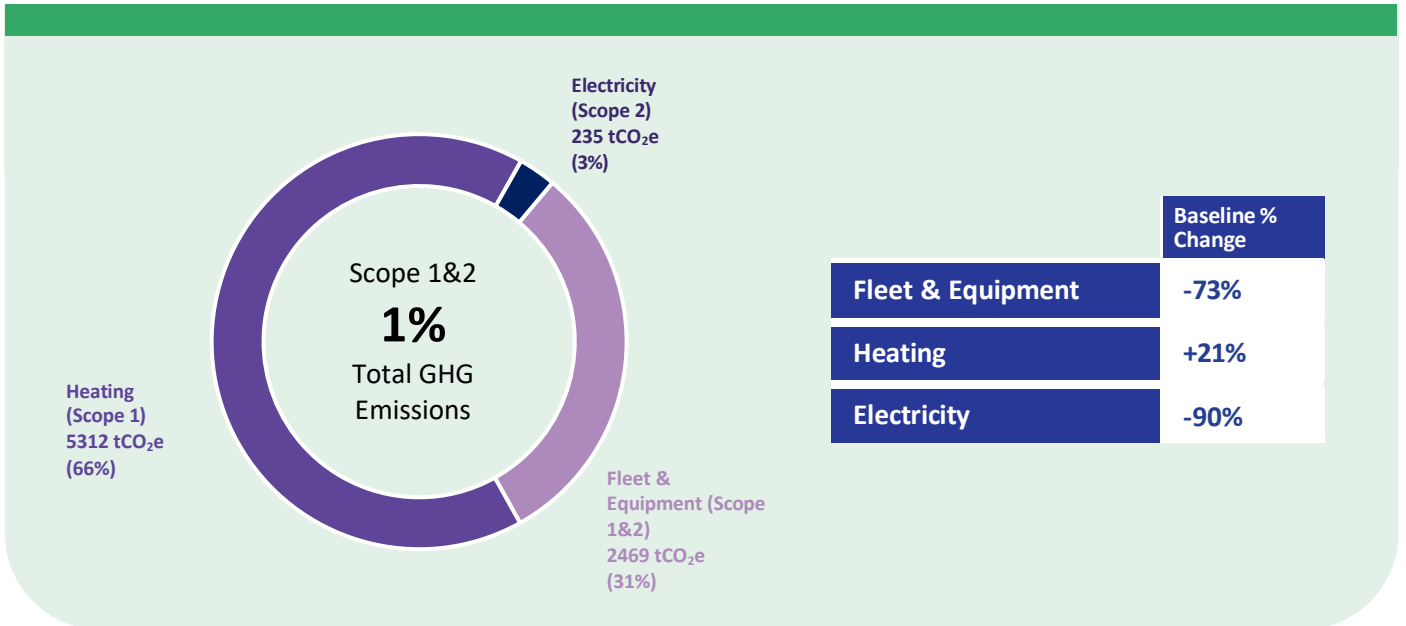
- This report summarises greenhouse gas (GHG) emissions data for Sodexo UK&I and provides a detailed breakdown for Sodexo UK, Sodexo Ireland, and Sodexo Limited operations.
- Sodexo UK&I have been actively tackling our climate impacts for over a decade following our partnership with WWF who have supported us in measuring and reducing our emissions.
- We set a baseline in FY2017 that covered not just our scope 1 and 2 direct operations, but all scope 3 categories across our value chain. This covered the period from 1st September 2016 through to 31st August 2017.
- The reporting periods post FY20 varies slightly with the base year, covering 1st June through to 31st May. The change was a consequence of external audit requirements for our Group financial reporting.
- All our GHG emissions data is audited externally, with the latest FY23 period verified to the level of 'reasonable assurance' across all categories of scopes 1,2 and 3.

Key figures



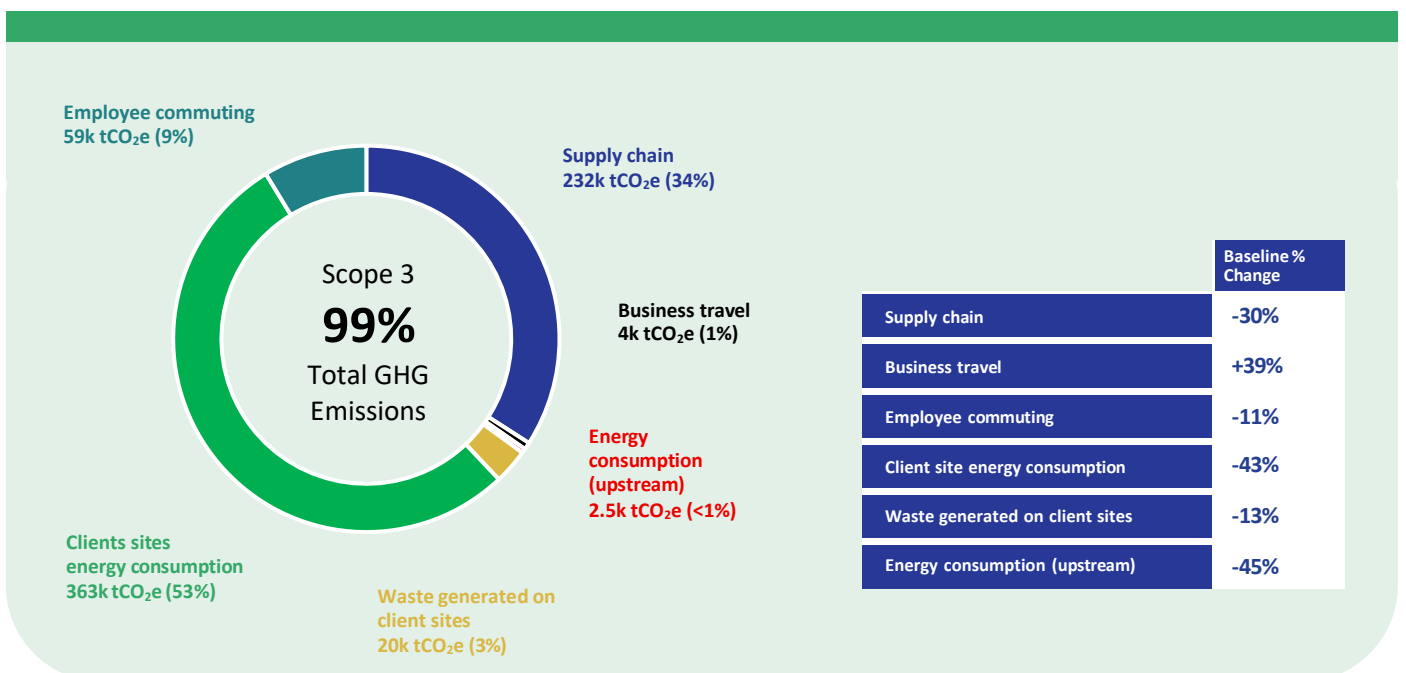
Sodexo UK&I FY22 Scope 1&2 GHG Emissions

- Scope 1 emissions relate to those emissions that we make directly, including the fuel we use in our vehicles and the heating of our offices.
- Scope 2 emissions refer to the indirect emissions from the generation of purchased electricity, such as powering our offices and electric vehicles.



Sodexo UK&I FY22 Scope 3 GHG Emissions

- Scope 3 emissions refers to all other indirect emissions that occur in our value chain, including supply chain, business travel, employee commuting, and client site energy and waste.



Sodexo UK&I Scope 1, 2 and 3 GHG Emissions

GHG Emissions	FY17	FY20	FY21	FY22	FY23
	tCO ₂ e	tCO ₂ e	tCO ₂ e	tCO ₂ e	tCO ₂ e
Scope 1 GHG emissions	13,658	13,092	9,937	8,638	7,709
Scope 2 GHG emissions (market-based)	2,299	2,587	94	496	271
Scope 3 Category 1 Purchased Goods & Services	317,097	229,220	147,036	213,510	227,835
Scope 3 Purchased Goods & Services - FLAG	203,507	124,629	78,442	123,553	121,665
Scope 3 Purchased Goods & Services - non-FLAG	113,591	104,591	68,594	89,958	106,170
Scope 3 Category 3 Fuel- and energy-related activities	4,559	3,762	2,545	2,933	2,455
Scope 3 Category 4 Upstream transportation and distribution	15,855	20,726	6,182	2,637	4,215
Scope 3 Category 5 Waste generated in operations	8,993	2,206	1,063	1,591	1,766
Scope 3 Category 6 Business travel	2,932	3,920	128	2,497	4,083
Scope 3 Category 7 Employee commuting	66,865	62,646	57,448	57,438	59,330
Scope 3 Category 8 Upstream Leased Assets	-	-	-	-	61
Scope 3 Category 11 Use of sold products	642,291	533,682	301,585	352,191	363,237
Scope 3 Category 12 End-of-life treatment of sold products	13,886	12,252	9,419	14,436	18,212
Scope 1&2 GHG Emissions	15,957	15,679	10,031	9,133	7,979
% reduction in absolute Scope 1&2 GHG emissions	n/a	-1.7%	-37.1%	-42.8%	-50.0%
Scope 3 GHG Emissions	1,072,480	868,415	525,407	647,233	681,192
% reduction in absolute Scope 3 (Non-FLAG) GHG emissions	n/a	-19.0%	-51.0%	-39.7%	-36.5%
Scope 3 GHG Emissions (Non-FLAG)	868,973	743,786	446,965	523,680	559,528
% reduction in absolute Scope 3 (Non-FLAG) GHG emissions	n/a	-14.4%	-48.6%	-39.7%	-35.6%
Scope 3 GHG Emissions (FLAG)	203,507	124,629	78,442	123,553	121,665
% reduction in absolute Scope 3 (FLAG) GHG emissions	n/a	-38.8%	-61.5%	-39.3%	-40.2%
Total Scope 1, 2 & 3 GHG Emissions	1,088,437	884,094	535,438	656,366	689,172
% reduction in absolute Scope 1&2 GHG emissions	n/a	-18.8%	-50.8%	-39.7%	-36.7%

Sodexo UK Scope 1, 2 and 3 GHG Emissions

GHG Emissions	FY17	FY20	FY21	FY22	FY23
	tCO ₂ e	tCO ₂ e	tCO ₂ e	tCO ₂ e	tCO ₂ e
Scope 1 GHG emissions	13,143	12,653	9,720	8,458	7,511
Scope 2 GHG emissions (market-based)	2,279	2,579	90	495	270
Scope 3 Category 1 Purchased Goods & Services	282,845	212,894	135,222	189,135	202,265
Scope 3 Purchased Goods & Services - FLAG	179,498	115,276	71,519	107,980	106,408
Scope 3 Purchased Goods & Services - non-FLAG	103,347	97,618	63,703	81,155	95,857
Scope 3 Category 3 Fuel- and energy-related activities	4,451	3,656	2,493	2,875	2,392
Scope 3 Category 4 Upstream transportation and distribution	14,142	19,127	5,756	2,417	3,896
Scope 3 Category 5 Waste generated in operations	8,273	2,082	981	1,447	1,613
Scope 3 Category 6 Business travel	2,757	3,695	60	2,215	3,756
Scope 3 Category 7 Employee commuting	64,089	59,321	54,518	54,389	56,233
Scope 3 Category 8 Upstream Leased Assets	-	-	-	-	51
Scope 3 Category 11 Use of sold products	581,281	474,616	270,432	328,846	319,709
Scope 3 Category 12 End-of-life treatment of sold products	12,366	11,369	8,725	13,137	16,730
Scope 1&2 GHG Emissions	15,423	15,232	9,809	8,953	7,781
% reduction in absolute Scope 1&2 GHG emissions	n/a	-1.2%	-36.4%	-41.9%	-49.5%
Scope 3 GHG Emissions	970,205	786,761	478,187	594,460	606,645
% reduction in absolute Scope 3 (Non-FLAG) GHG emissions	n/a	-18.9%	-50.7%	-38.7%	-37.5%
Scope 3 GHG Emissions (Non-FLAG)	790,707	671,485	406,668	486,480	500,237
% reduction in absolute Scope 3 (Non-FLAG) GHG emissions	n/a	-15.1%	-48.6%	-38.5%	-36.7%
Scope 3 GHG Emissions (FLAG)	179,498	115,276	71,519	107,980	106,408
% reduction in absolute Scope 3 (FLAG) GHG emissions	n/a	-35.8%	-60.2%	-39.8%	-40.7%
Total Scope 1, 2 & 3 GHG Emissions	985,627	801,993	487,996	603,413	614,426
% reduction in absolute Scope 1&2 GHG emissions	n/a	-18.6%	-50.5%	-38.8%	-37.7%

Sodexo Ireland Scope 1, 2 and 3 GHG Emissions

GHG Emissions	FY17	FY20	FY21	FY22	FY23
	tCO _{2e}	tCO _{2e}	tCO _{2e}	tCO _{2e}	tCO _{2e}
Scope 1 GHG emissions	514	440	217	179	197
Scope 2 GHG emissions (market-based)	20	7	4	1	1
Scope 3 Category 1 Purchased Goods & Services	34,252	16,326	11,814	24,376	25,570
<i>Scope 3 Purchased Goods & Services - FLAG</i>	<i>24,009</i>	<i>9,353</i>	<i>6,923</i>	<i>15,573</i>	<i>15,257</i>
<i>Scope 3 Purchased Goods & Services - non-FLAG</i>	<i>10,243</i>	<i>6,973</i>	<i>4,891</i>	<i>8,803</i>	<i>10,313</i>
Scope 3 Category 3 Fuel- and energy-related activities	108	106	52	58	63
Scope 3 Category 4 Upstream transportation and distribution	1,713	1,599	426	221	318
Scope 3 Category 5 Waste generated in operations	720	124	82	144	153
Scope 3 Category 6 Business travel	175	225	68	281	327
Scope 3 Category 7 Employee commuting	2,776	3,325	2,930	3,049	3,097
Scope 3 Category 8 Upstream Leased Assets	-	-	-	-	10
Scope 3 Category 11 Use of sold products	61,011	59,066	31,154	23,345	43,528
Scope 3 Category 12 End-of-life treatment of sold products	1,521	883	694	1,299	1,482
Scope 1&2 GHG Emissions	535	447	222	180	198
% reduction in absolute Scope 1&2 GHG emissions	n/a	-16.4%	-58.5%	-66.3%	-62.9%
Scope 3 GHG Emissions	102,275	81,654	47,220	52,773	74,548
% reduction in absolute Scope 3 (Non-FLAG) GHG emissions	n/a	-20.2%	-53.8%	-48.4%	-27.1%
Scope 3 GHG Emissions (Non-FLAG)	78,266	72,301	40,297	37,200	59,291
% reduction in absolute Scope 3 (Non-FLAG) GHG emissions	n/a	-7.6%	-48.5%	-52.5%	-24.2%
Scope 3 GHG Emissions (FLAG)	24,009	9,353	6,923	15,573	15,257
% reduction in absolute Scope 3 (FLAG) GHG emissions	n/a	-61.0%	-71.2%	-35.1%	-36.5%
Total Scope 1, 2 & 3 GHG Emissions	102,810	82,101	47,442	52,953	74,746
% reduction in absolute Scope 1&2 GHG emissions	n/a	-20.1%	-53.9%	-48.5%	-27.3%

Sodexo Limited Scope 1, 2 and 3 GHG Emissions

GHG Emissions	FY17	FY20	FY21	FY22	FY23
	tCO ₂ e	tCO ₂ e	tCO ₂ e	tCO ₂ e	tCO ₂ e
Scope 1 GHG emissions	12,214	11,878	9,270	8,162	7,269
Scope 2 GHG emissions (market-based)	2,125	2,451	86	478	261
Scope 3 Category 1 Purchased Goods & Services	262,818	193,478	118,649	174,931	193,546
<i>Scope 3 Purchased Goods & Services - FLAG</i>	<i>166,487</i>	<i>103,320</i>	<i>60,692</i>	<i>98,543</i>	<i>101,460</i>
<i>Scope 3 Purchased Goods & Services - non-FLAG</i>	<i>96,331</i>	<i>90,158</i>	<i>57,957</i>	<i>76,389</i>	<i>92,086</i>
Scope 3 Category 3 Fuel- and energy-related activities	4,138	3,437	2,378	2,774	2,315
Scope 3 Category 4 Upstream transportation and distribution	13,141	17,235	5,119	2,249	3,706
Scope 3 Category 5 Waste generated in operations	7,702	1,899	844	1,303	1,485
Scope 3 Category 6 Business travel	2,647	3,561	54	2,123	3,621
Scope 3 Category 7 Employee commuting	59,706	55,816	52,001	52,472	54,422
Scope 3 Category 8 Upstream Leased Assets	-	-	-	-	49
Scope 3 Category 11 Use of sold products	642,291	533,682	301,585	352,191	363,237
Scope 3 Category 12 End-of-life treatment of sold products	13,886	12,252	9,419	14,436	18,212
Scope 1&2 GHG Emissions	14,339	14,328	9,356	8,639	7,530
% reduction in absolute Scope 1&2 GHG emissions	n/a	-0.1%	-34.8%	-39.8%	-47.5%
Scope 3 GHG Emissions	921,725	739,482	442,343	552,273	588,558
% reduction in absolute Scope 3 (Non-FLAG) GHG emissions	n/a	-19.8%	-52.0%	-40.1%	-36.1%
Scope 3 GHG Emissions (Non-FLAG)	755,238	636,162	381,651	453,731	487,099
% reduction in absolute Scope 3 (Non-FLAG) GHG emissions	n/a	-15.8%	-49.5%	-39.9%	-35.5%
Scope 3 GHG Emissions (FLAG)	166,487	103,320	60,692	98,543	101,460
% reduction in absolute Scope 3 (FLAG) GHG emissions	n/a	-37.9%	-63.5%	-40.8%	-39.1%
Total Scope 1, 2 & 3 GHG Emissions	936,064	753,810	451,699	560,913	596,089
% reduction in absolute Scope 1&2 GHG emissions	n/a	-19.5%	-51.7%	-40.1%	-36.3%